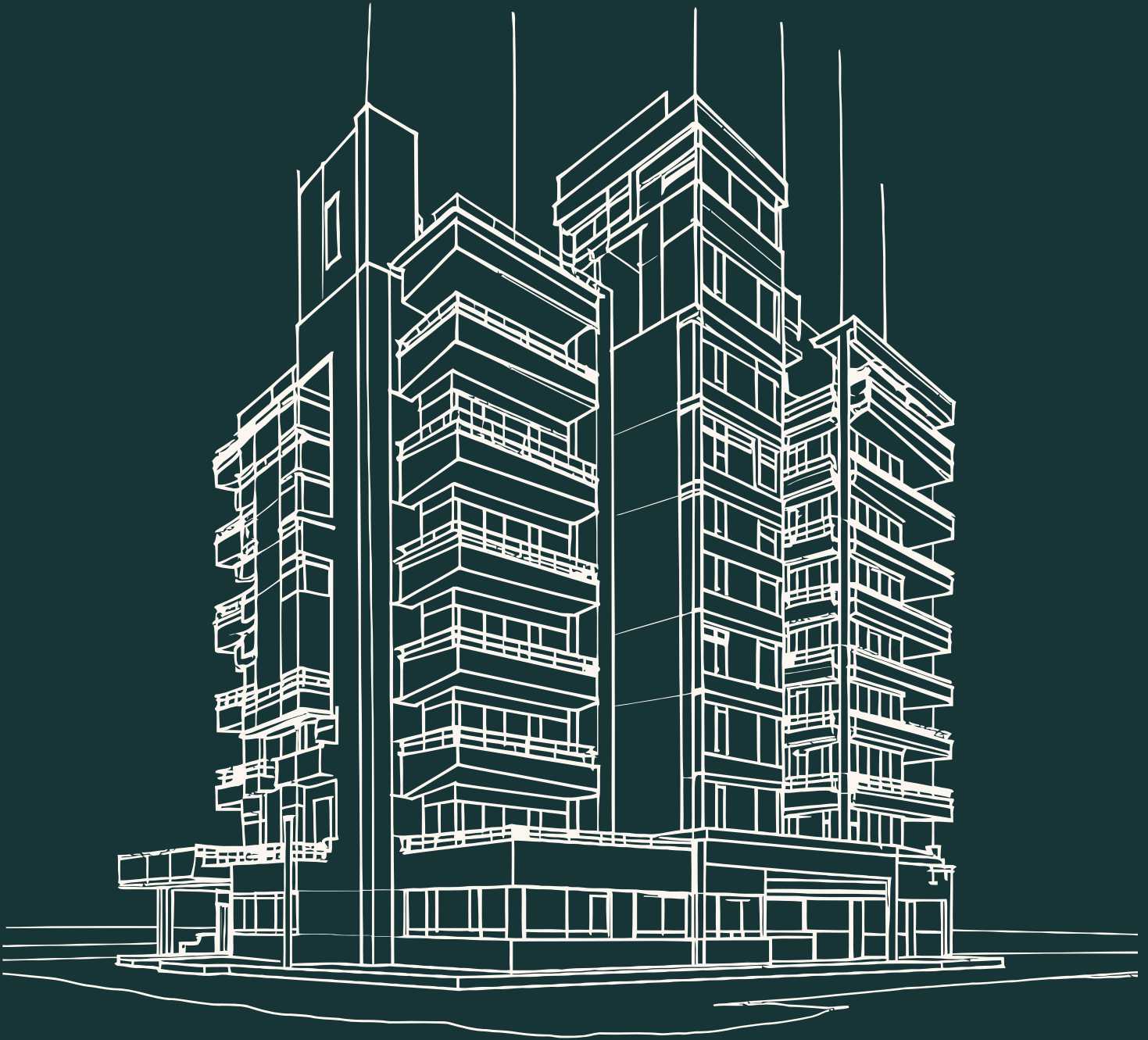


INDUSTRIAL **PORTFOLIO**



CONSTRUCTION & DESIGN FIRM IN NIGERIA

WELCOME TO **WARESWORTH LIMITED**

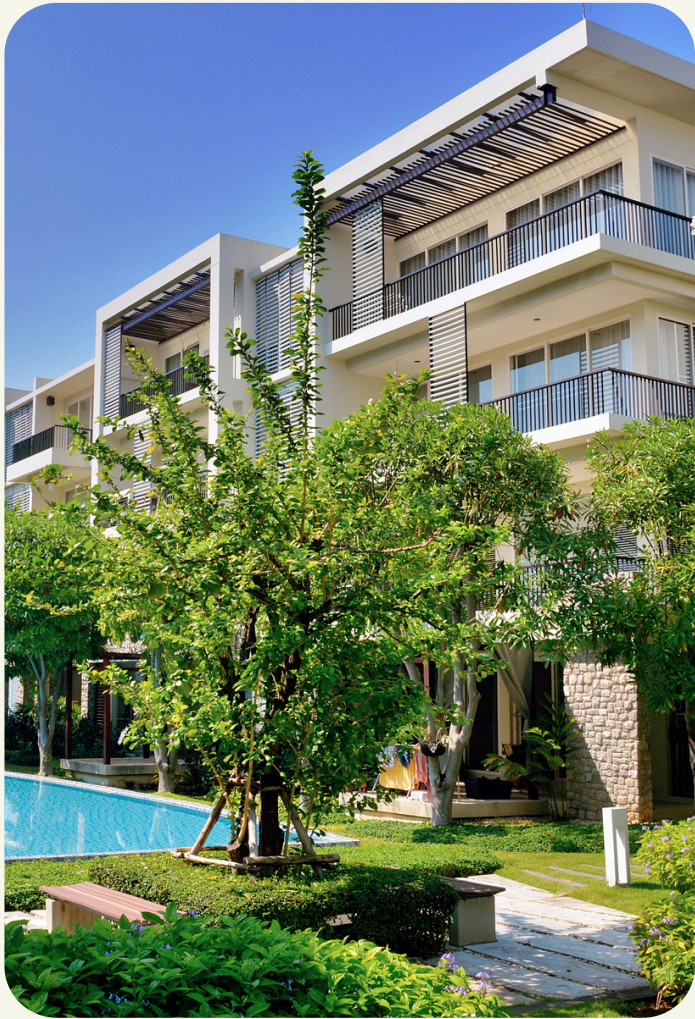
Waresworth Limited is a premier construction and design service firm based in Nigeria, committed to delivering excellence in every project we undertake. Our expertise spans across residential, commercial, and industrial construction, paired with innovative design solutions that bring visions to life.



We specialize in providing end-to-end services, from architectural planning and structural engineering to interior design and project management. At Waresworth, we integrate creativity, functionality, and sustainability to build spaces that not only meet but exceed expectations.

Our team of experienced professionals is dedicated to maintaining the highest standards of quality, safety, and efficiency. Whether it's constructing state-of-the-art facilities or designing bespoke interiors, Waresworth Limited is your trusted partner in transforming ideas into reality.

VALUES



THE PINNACLE OF EXCELLENCE

Our vision is to be the leading force in redefining construction and design across Africa and beyond. We aspire to set new benchmarks in excellence, seamlessly blending innovation, **sustainability**, and timeless **craftsmanship**.

Our goal is to transform landscapes, create iconic structures, and leave a lasting legacy of quality and distinction.



Our mission is to revolutionize construction and design by delivering innovative, sustainable, and high-quality solutions tailored to the unique needs of our clients.

With an unwavering commitment to **precision, creativity, and cutting-edge technology**, we ensure that every project embodies excellence while upholding the highest standards of integrity and professionalism.

WORTH



Having led transformative projects around the world, I understand that true excellence is about more than just building structures, it's about creating a legacy. We are driven by a relentless commitment to quality, innovation, and sustainability, ensuring every project leaves an indelible mark.

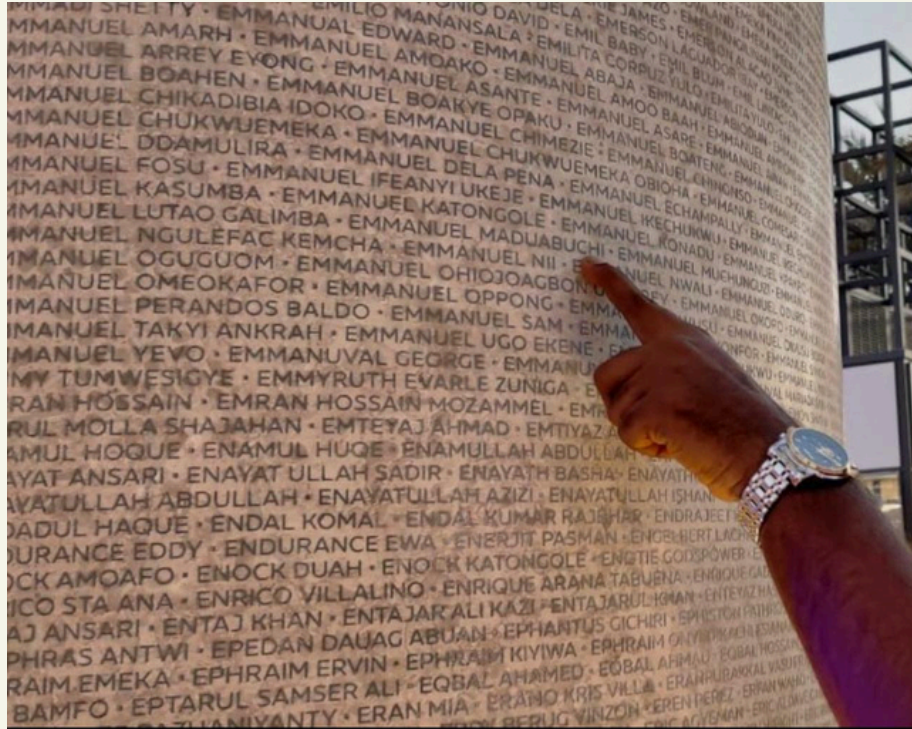
At the heart of our work is a vision to redefine possibilities and deliver outcomes that inspire confidence, trust, and admiration.

EMMANUEL M. EGBUOBI
CHIEF EXECUTIVE OFFICER

At Waresworth Limited, our vision is rooted in delivering unparalleled excellence in every project we undertake. We assure our clients that every detail is handled with precision and care, ensuring that our solutions not only meet but exceed expectations. As a forward-thinking construction and design firm, we are dedicated to building a legacy of trust, innovation, and environmental responsibility.



INTERNATIONAL PROJECTS UNDERTAKEN

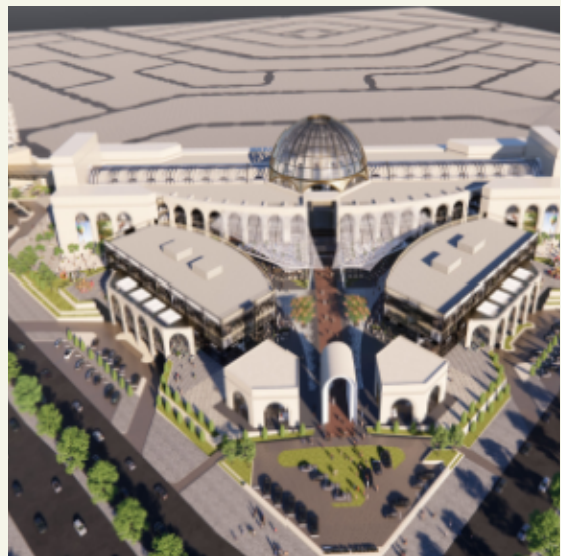


EXPO CITY DEVELOPMENT MONUMENTAL RECOGNITION

INTERNATIONAL PROJECTS UNDERTAKEN

COUNTRY: SAUDI ARABIA

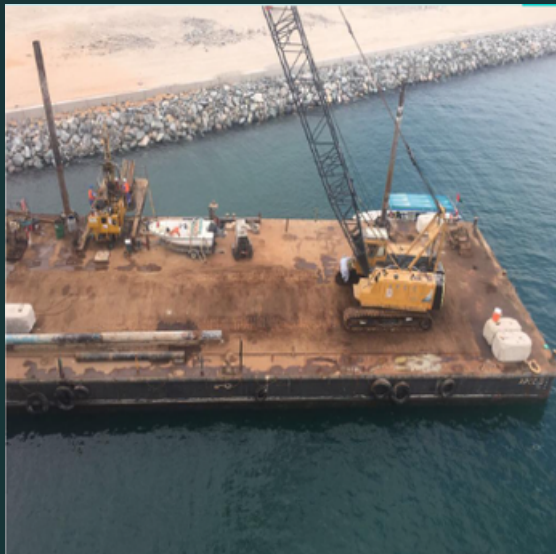
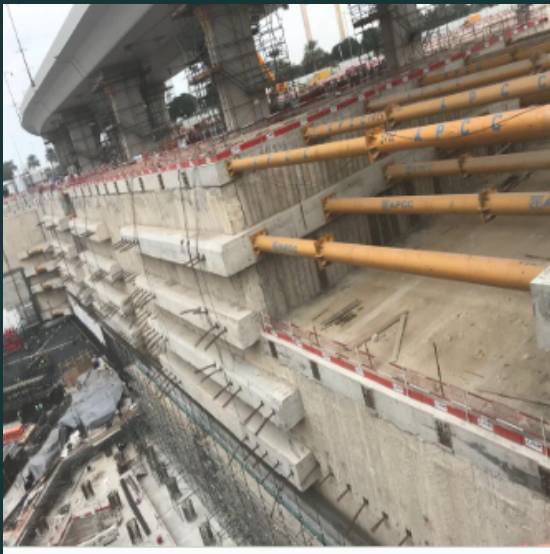
SCOPE OF WORK: LUXURY HOTELS & RESORTS, MEDICAL FACILITIES, PORT DEVELOPMENT AND MIXED-USE DEVELOPMENT



INTERNATIONAL PROJECTS UNDERTAKEN

COUNTRY: UNITED ARAB EMIRATES (DUBAI & ABU DHABI)

SCOPE OF WORK: EXPO CITY DEVELOPMENT, MEDICAL FACILITIES,
LAND RECLAMATION & ENABLING WORKS, AND MIXED-USE
DEVELOPMENT



OUR TEAM

The strength of any great company lies in its people. Our team at Waresworth Limited is a dynamic synergy of architects, engineers, designers, and project managers, each bringing a wealth of experience, innovation, and technical expertise.





Khaled Al Haj Hamed is a distinguished Chief Technical Consultant with over two decades of comprehensive experience in the civil engineering and general construction industries.

His career spans an impressive array of roles including contractor, consultant, client representative, and project management expert, making him a well-rounded and highly capable leader in the built environment sector. Khaled's wealth of knowledge and practical insight allows him to guide and oversee the Engineering, Project Management, and Technical Services departments with strategic clarity and operational excellence.

KHALED AL HAJ HAMED

CHIEF TECHNICAL CONSULTANT

Khaled holds both a bachelor's and a master's degree in civil engineering and is a registered consultant engineer in the Kingdom of Saudi Arabia. He is an ex-member of the ASCE and ex-member of the CIOB. He also holds prestigious professional certifications, including the International Project Management Office – Practitioner (IPMO-P) and Associate Membership of the Chartered Institute of Arbitrators (ACI Arb), underscoring his commitment to maintaining the highest standards of technical and managerial proficiency.

As the Chief Technical Consultant, Khaled Al Haj Hamed is dedicated to driving excellence, fostering innovation, and ensuring that every project under his guidance contributes meaningfully to the advancement of the industry and the communities it serves.



Dominic Anindu, Senior Architect, Interior designer, building consultant and renovation expert. With over a decade of exceptional experience and industry expertise. Dominic has established himself as a leading authority in architecture and building design.

His unique architecture designs serve as the blueprint for execution, delivering unparalleled results that sets the expected standards in the industry.

DOMINIC ANINDU

DIRECTOR OF CONSTRUCTION SERVICES

Under Dominic's visionary leadership and expertise, he has successfully created unique buildings designs, transformed existing building and spaces into stunning, modern masterpieces , encompassing residential, commercial, and religious structures . A seasoned architect with impressive credentials, Dominic holds prestigious degrees in architecture and has received special recognition as a West Africa Youth Ambassador.

Committed to excellence, Dominic oversees every project, ensuring seamless integration of client needs and expectations. His unwavering dedication to integrity, quality, and functionality continues to enable the execution of exceptional and sustainable design solutions .



Princess Olewuezi brings a wealth of experience in operations, project management, and business strategy.

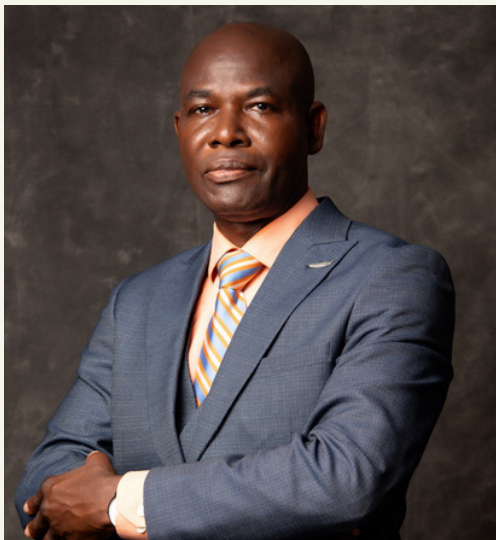
As Director of Operations, she ensures the seamless execution of projects, streamlines workflows, and drives efficiency across all departments.

PRINCESS OLEWUEZI
DIRECTOR OF OPERATIONS

With a background spanning e-commerce, luxury retail, oil & gas, and pharmaceuticals, she has successfully managed operations in fast-paced industries. She has experience overseeing supply chain logistics, optimizing digital platforms, and improving business processes to enhance productivity.

Her expertise in cross-functional coordination and strategic planning allows her to navigate complex challenges while maintaining high standards.

Focused on structure, execution, and results, she is committed to maintaining efficiency and ensuring the company's continued growth.



M.O. Olusegun Afolabi is a distinguished legal professional with over two decades of experience in the Nigerian legal system. He obtained his Law degree from Obafemi Awolowo University, Ile-Ife, and was called to the Nigerian Bar in 1995, enrolling at the Supreme Court of Nigeria as a Barrister and Solicitor.

Throughout his career, he has worked with several top-tier law firms in Nigeria, handling a wide range of complex legal matters across various sectors. His expertise covers litigation, corporate law, commercial transactions, and regulatory compliance, with a track record of success at both superior courts of record and appellate courts.

M. O. OLUSEGUN AFOLABI
LEGAL CONSULTANT

As a trusted legal consultant, he advises corporate organizations on diverse legal issues, offering strategic guidance and ensuring regulatory alignment. His insight and counsel continue to play a vital role in the growth and compliance of Wares Worth Limited.

He also serves on the boards of a reputable financial institution and two leading real estate companies in Nigeria, where he contributes his deep legal knowledge to support sound governance and business development.



Tejiri Lorenta Okriyo is a highly skilled Business Development Expert with over a decade of experience in the sales industry, with a strong focus on real estate and a deep understanding of multiple sectors. Known for her ability to build lasting relationships and drive business growth, she combines strategic thinking with a personal touch, ensuring that every client receives solutions tailored to their unique needs.

TEJIRI OKRIYO

HEAD OF BUSINESS DEVELOPMENT

Her expertise extends beyond sales, it's about understanding people, identifying opportunities, and navigating complex negotiations with confidence and precision. She is dedicated to creating value for clients by crafting innovative solutions that align with their goals while ensuring seamless deal execution.

With a Master's degree in Business Administration, she brings a strong foundation in business strategy, marketing, and financial analysis, allowing her to approach challenges with a well-rounded perspective. This combination of academic knowledge and real-world experience enables her to develop impactful sales strategies that not only drive results but also foster trust and long-term partnerships.



Priscilla holds the pivotal role of Commercial/Procurement Director at Wares Worth Limited, bringing to the forefront a wealth of experience and expertise in the realms of public administration and corporate distribution. Armed with a solid educational background in Public Administration, Priscilla's strategic vision and commitment to excellence make her an invaluable member of our dynamic team.

PRISCILLIA EGBUOBI

COMMERCIAL/PROCUREMENT DIRECTOR

In her capacity as the Commercial/Procurement Director, Priscilla plays a multifaceted role, overseeing not only procurement activities but also crafting and implementing commercial strategies that drive the growth and success of our company. Her meticulous approach and keen business acumen ensure that Wares Worth Limited consistently thrives in delivering top-notch products and services to our clients.

Priscilla's role extends beyond routine procurement responsibilities; she is a leader in developing and implementing innovative procurement solutions. Her insight into market trends and proactive approach to sourcing high-quality materials and products contribute significantly to the company's commitment to excellence in every project.



SERVICES OVERVIEW

CONSTRUCTION SERVICES

We deliver world-class construction solutions across residential, commercial, and industrial sectors. From groundbreaking to completion, our projects are defined by precision, innovation, and an unwavering commitment to excellence.

ARCHITECTURAL DESIGN

Our architectural designs blend creativity, functionality, and sustainability to craft timeless structures. Each design is a harmonious balance of aesthetics and practicality, tailored to our clients' unique visions.

STRUCTURAL ENGINEERING

We provide cutting-edge structural engineering solutions that ensure safety, durability, and efficiency. Every structure we engineer meets the highest global standards for strength and resilience.



3D MODELING AND RENDERING

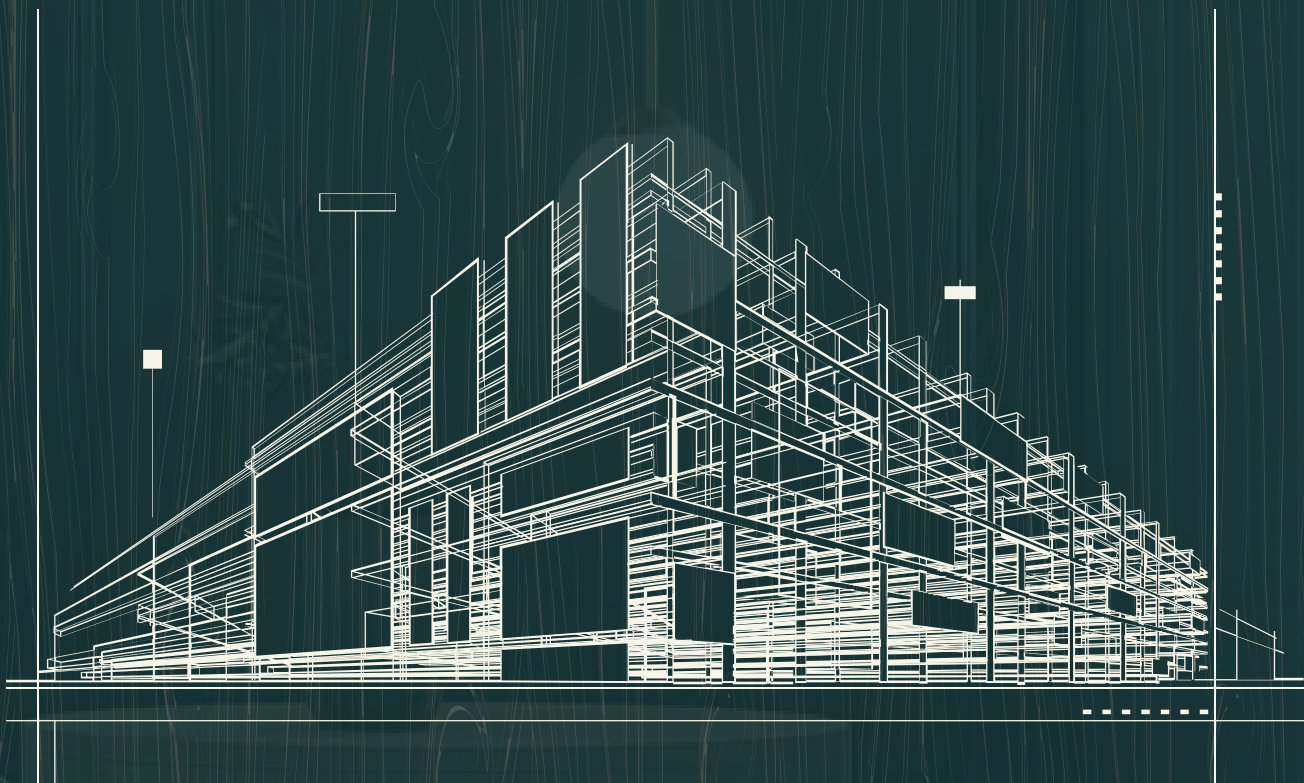
Our advanced 3D modeling and rendering services bring concepts to life with photo-realistic visuals. This ensures clients can visualize every detail of their projects with confidence and clarity.

CONSULTING SERVICES

As trusted industry advisors, we offer expert consulting services across construction and design. Our insights and strategies empower clients to navigate challenges, optimize resources, and achieve their objectives seamlessly.

INTERIOR AND LANDSCAPE DESIGN

We craft harmonious living and working environments by seamlessly blending interior and exterior spaces. Our designs combine elegance, functionality, and sustainability, creating cohesive spaces that reflect your vision, both indoors and out.



our projects



THE GRAND IKOYI 5- BEDROOM DUPLEX REVIVAL

Delivered within an impressive one-month timeline, this project was meticulously crafted to be ready for the festive season, ensuring the home exudes warmth and grandeur.

A true transformation, this 5-bedroom duplex in Ikoyi underwent a sophisticated exterior renovation, seamlessly blending modern elegance with timeless luxury.

BEFORE



AFTER

SCOPE OF WORK

- Installation of premium stone and wooden tiles for a refined aesthetic
- Modern exterior lighting to enhance ambiance and security
- Poolside sit-out area creation for relaxation and entertainment
- Complete pool refurbishment, elevating the leisure experience
- External flooring upgrade for durability and style
- Soft landscaping enhancements, bringing life and vibrancy to the outdoor space
- Gate modernization, making a striking first impression



A LEGACY REINVENTED

FAMILY HOME RENOVATION

In just four weeks, this cherished family home was reimagined into a modern sanctuary, seamlessly integrating contemporary luxury with the essence of family heritage. Our client envisioned a space that would bring joy and comfort to both immediate and extended family members, just in time for the festive season.



BEFORE

With meticulous attention to detail, our team ensured that while the home embraced a refreshed aesthetic, sentimental features were preserved to honor the family's legacy. The result is a harmonious blend of modern sophistication and nostalgic charm—a home that tells a story while standing the test of time.

AFTER



SCOPE OF WORK

- **Facade Upgrade:** Enhanced exterior finishes to modernize the home while maintaining its timeless appeal.
- **Structural Enhancements:** Reinforced key structural elements to improve durability and longevity.
- **Heritage Preservation:** Retained key design elements to honor the family's legacy while integrating modern touches.

WARES



WORTH

DUPLEX EXPANSION & FACELIFT

This remarkable duplex transformation has redefined luxury living, enhancing both space and functionality while infusing modern elegance. Our expert renovation extended the home's footprint, creating additional spaces for unparalleled comfort.

A modernized facade, enhancing the property's overall curb appeal.



BEFORE

DUPLEX FEATURES

Additional spaces, including:

- Extra toilet for convenience
- Expansive family lounge for intimate gatherings
- Maid's room, ensuring dedicated staff quarters
- Verandah, offering serene outdoor relaxation

AFTER



BOYS QUARTER TRANSFORMATION

- Converted into a self-contained 2-bedroom apartment
- Strategically expanded with an additional upper floor, featuring two new bedrooms

WARES



WORTH

What began as a bare frame carcass evolved into a dynamic commercial hub, meticulously designed to optimize functionality and aesthetics.

Tasked with revitalizing both the interior and exterior, we delivered a space that maximized operational efficiency while exuding a commanding presence.

A VISION BROUGHT TO LIFE

COMMERCIAL BUILDING TRANSFORMATION



BEFORE

Now standing as a beacon of business excellence, this commercial space embodies sophistication, functionality, and long-term investment value.

AFTER



SCOPE OF WORK

- Interior reconfiguration to enhance spatial efficiency and workflow
- High-end finishing touches to reflect corporate prestige
- Modernized exterior facade for a bold, contemporary statement
- Structural reinforcements to ensure longevity and adaptability

MODERN COUNTRY HOME MAKEOVER

TIMELESS TRANQUILITY

This country home was transformed into a contemporary retreat while maintaining its serene charm. Our client envisioned a home that fused modern luxury with sustainability—where architectural brilliance meets nature's tranquility.

BEFORE



SCOPE OF WORK

- A complete facade renovation, infusing sleek, modern design elements
- Creation of new internal spaces to enhance functionality and usability
- Strategic enhancements to existing areas, elevating the living experience
- Sustainability-driven external improvements, incorporating lush green spaces and energy-efficient solutions



AFTER

This country home now stands as a refined sanctuary, offering the perfect balance between modern design, functionality, and nature's embrace.

OPULENT 11- BEDROOM LUXURY ESTATE

ARCHITECTURAL DESIGN & BUILD | IMO STATE

This prestigious 11-bedroom estate is an ongoing architectural project set to redefine luxury living in Imo State. Designed for elegance, functionality, and modern sophistication, the project is currently in its developmental phase, with comprehensive 3D renderings completed to bring the vision to life.



WARES



KEY FEATURES OF THE DESIGN

- **Grand Architectural Concept** – A fusion of contemporary and classic styles for a timeless aesthetic.
- **Expansive Landscaping** – Thoughtfully planned green spaces to enhance beauty and tranquility.
- **Ample Parking & Driveways** – Designed to accommodate multiple vehicles with ease.
- **Luxurious Space Planning** – Spacious interiors for comfort, privacy, and seamless living.
- **Premium Finishing Vision** – High-end materials and exquisite detailing incorporated into the design.

WORTH



WARES



WORTH

ELEVATING EXCELLENCE

WHY DISCERNING CLIENTS CHOOSE US



Discerning individuals and visionary investors understand that true luxury extends beyond aesthetics—it is an integration of precision, innovation, and timeless sophistication. Our firm is renowned for curating bespoke architectural masterpieces that redefine opulence while maintaining structural integrity and functional excellence.

Unrivalled Expertise & Visionary Design

With a portfolio that spans high-end residential estates, commercial edifices, and luxury retreats, we bring a wealth of expertise in both architectural design and precision engineering. Our team of world-class architects, structural engineers, and project managers ensures that every project is a reflection of your aspirations.

Unrivalled Expertise & Visionary Design

Bespoke, Legacy-Defining Creations Luxury is personal. That's why we craft each project to align seamlessly with your lifestyle, identity, and long-term investment goals. From architectural concept to the final build, our meticulous attention to detail ensures that every space is a statement of prestige.

State-of-the-Art Visualization & Precision Execution

We bridge the gap between vision and reality with ultra-realistic 3D architectural renderings that offer a glimpse into the final masterpiece before construction begins. Our cutting-edge project execution guarantees flawless realization of the envisioned design.



Exquisite Materials & Impeccable Finishing

A true luxury space is defined by the quality of its craftsmanship. We source only the finest materials from around the world, ensuring that every surface, fixture, and detail reflects the highest standard of opulence and durability.

Seamless Project Management & Exclusive Service

Our clients lead demanding lives, and we honor their time by delivering exceptional projects with efficiency and discretion. With our tailored, high-touch project management, you remain informed without the burden of micromanagement—ensuring a seamless, stress-free experience.



Sustainability Meets Modern Luxury

We integrate eco-conscious, energy-efficient solutions into our designs, ensuring a legacy that is both timeless and responsible. Our approach combines innovation with environmental awareness to create future-proof luxury developments.

An Investment in Prestige & Value

Whether you seek a high-end personal residence, a revenue-generating property, or a commercial landmark, our expertise ensures that your investment is not only aesthetically iconic but also strategically valuable.

Pioneering the Future

A photograph of two men at a construction site. The man on the left is seen from the side, wearing a white hard hat, a checkered shirt, and a high-visibility yellow safety vest with the Waresworth logo. He is holding a small electronic device. The man on the right is facing him, wearing a white hard hat with the Waresworth logo, glasses, a blue suit, a patterned tie, and a high-visibility yellow safety vest with the Waresworth logo. They are standing in front of a building under construction. The background shows construction materials and a clear sky.

At Waresworth Limited, we are always looking ahead, exploring new opportunities to expand our impact across industries. While our core expertise lies in construction, design, and consulting, we envision a future where we lead and innovate in various sectors.

Renewable & Sustainable Energy

As global energy demands shift toward sustainability, we plan to invest in solar, wind, and alternative energy solutions that promote a cleaner, greener future.



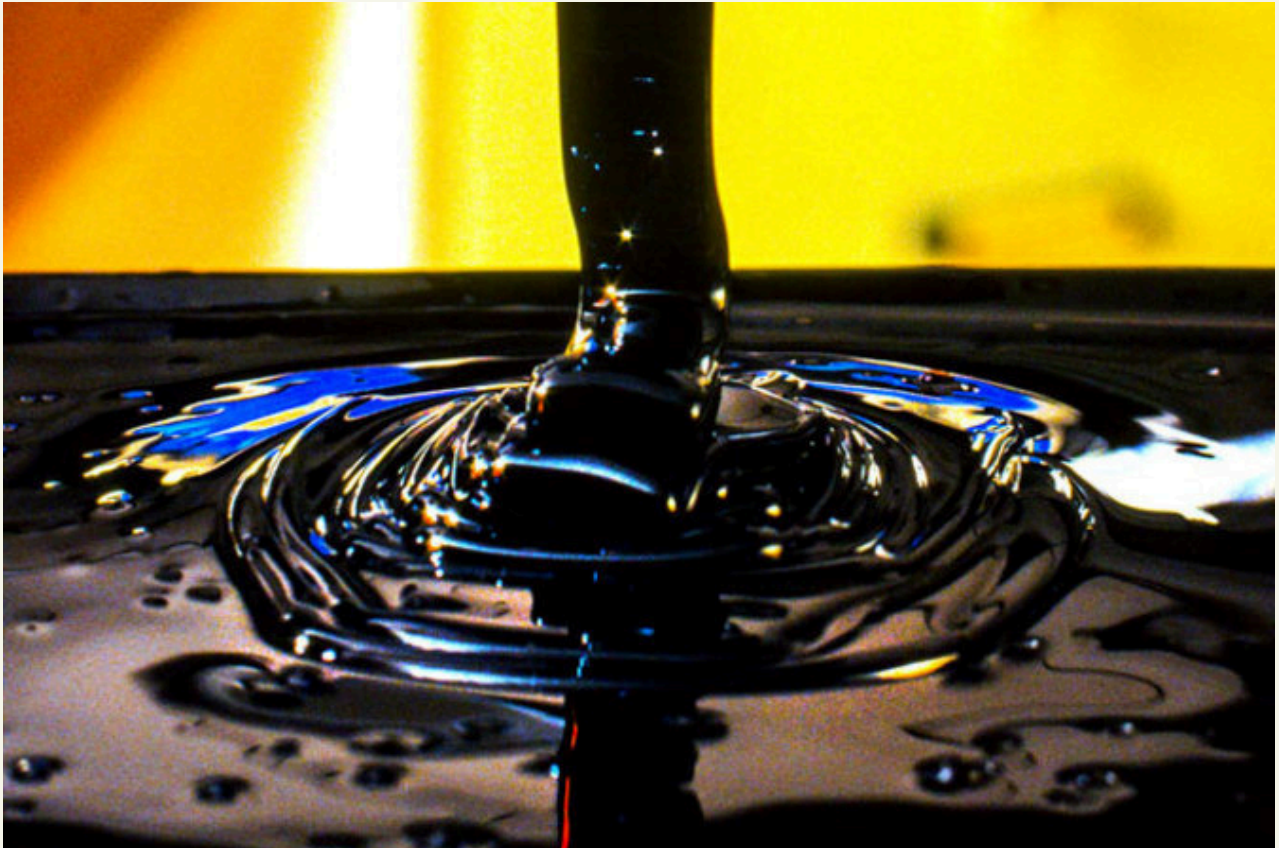
Agriculture & Agribusiness

Food security and sustainable farming are key to economic growth. In the future, we aim to support modern agricultural practices, precision farming, and agribusiness investments.



Oil & Gas

Energy remains a crucial sector, and we see opportunities to expand into oil exploration, refining, and energy distribution, ensuring efficiency and sustainability in resource management.



A high-angle photograph of two men standing on a dirt construction site. Both are wearing white hard hats with a logo, high-visibility yellow safety vests over business attire, and dark trousers. The man on the left is wearing a blue suit and tie, while the man on the right is wearing a patterned shirt. They are both looking down at something in the man on the left's hands. The background is a dry, rocky dirt area with some sparse vegetation.

Media & Communications

Strong branding and digital presence are essential for success. We plan to develop expertise in content creation, digital marketing, and media production to enhance communication and business growth..

Real Estate & Property Development

Beyond construction, we aspire to become a leader in residential, commercial, and industrial property development, creating sustainable and high-value real estate investments.

Technology & Innovation

The future is digital, and we aim to integrate smart building solutions, AI-driven project management, and advanced tech innovations into our operations to enhance efficiency and customer experience.

WARES

CRAFTING
TOMORROW'S
ELEGANCE TODAY



INNOVATIVE DESIGNS,
LASTING STRUCTURES

WHERE VISION MEETS
PRECISION



WORK

PARTNER WITH US

For those who demand exceptional craftsmanship, architectural brilliance, and uncompromising quality, we are the trusted partner in bringing grandeur to life.

Phone : +2349063151275
Email : contract@waresworthltd.com
Website : www.waresworthltd.com
Office : Abuja, Nigeria.



CONSTRUCTION & DESIGN FIRM IN NIGERIA